



# Surface Mining Loader Tyre Protection Chains

[WWW.ENSTRUC.COM](http://WWW.ENSTRUC.COM) | [INFO@ENSTRUC.COM](mailto:INFO@ENSTRUC.COM)



# How pewag TPCs are produced & our guarantee to you?

## Welding equipment:

- Production on electronically operated welding machines for a consistently high quality standard

## Heat treatment:

- The **special hardening** using latest techniques leads to **high wear resistance** and particularly **long service life** (*biggest chamber furnaces in Europe*)
- **Cryogenic** treatment for **higher wear & breaking resistance of rings & links**

## Quality Assurance System:

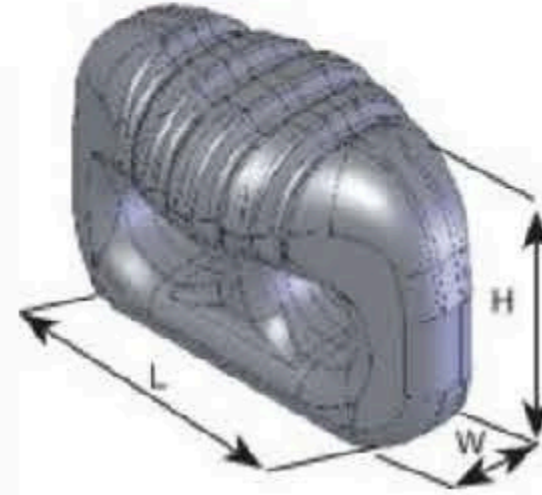
- Our Quality Inspectors operating as part of our PEWAG Quality Assurance System – certified according to ISO 9001

## Environmental responsibility:

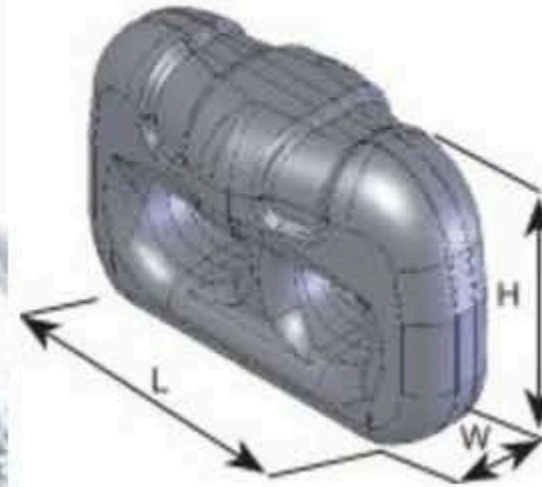
- Ecological awareness in all areas according to ISO 14001



# A specialised link for every condition



**TYCOON:** Ultra-resistant heavy duty wear link especially developed for the world's largest wheel loaders as well as for operations in most abrasive hard rock conditions.



**COMPACT:** Heavy duty link for giant loaders with large wear volume for maximum service life. Suitable for all rock applications and in large scale mining operations.



**SPIKE 21:** Narrow link design with grip teeth provides excellent traction and self cleaning. For all applications where traction is needed.

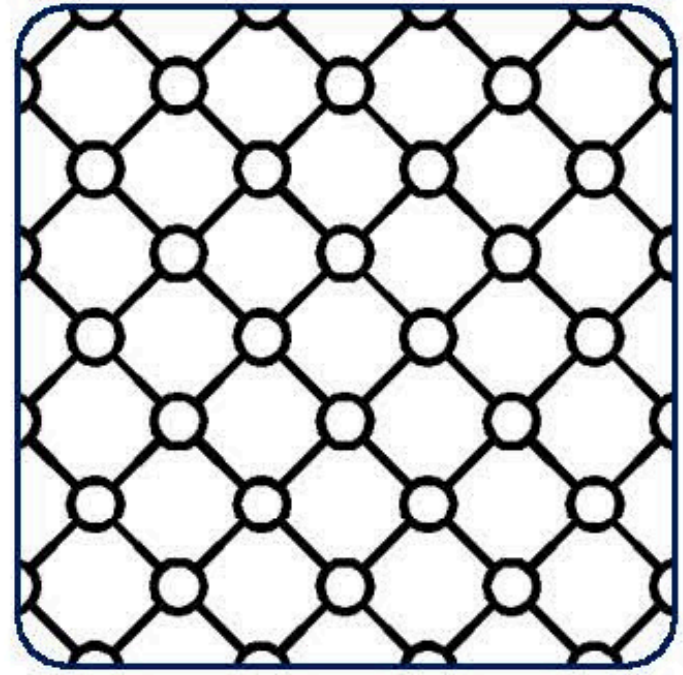
# Types of Mesh – We've got you covered



**ENSTRUC**  
WEAR SOLUTIONS

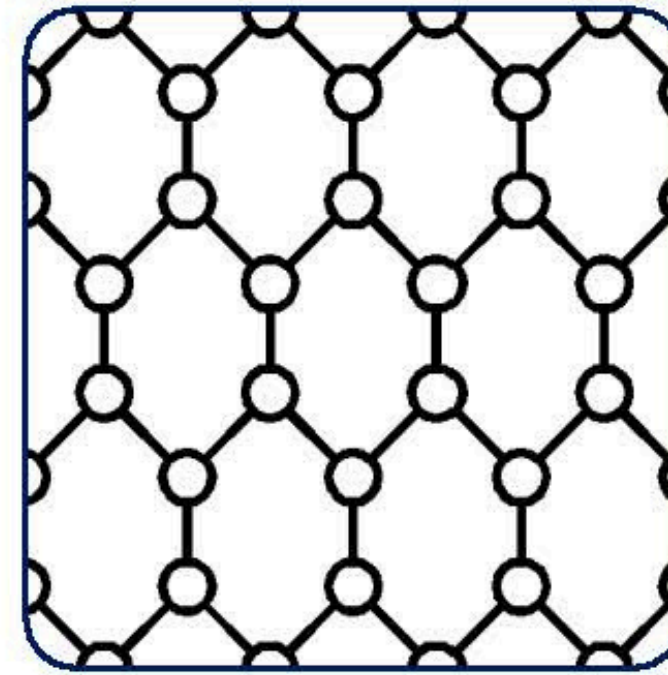
**pewag**

**STRONG  
IS NOT  
ENOUGH**  
www.pewag.com



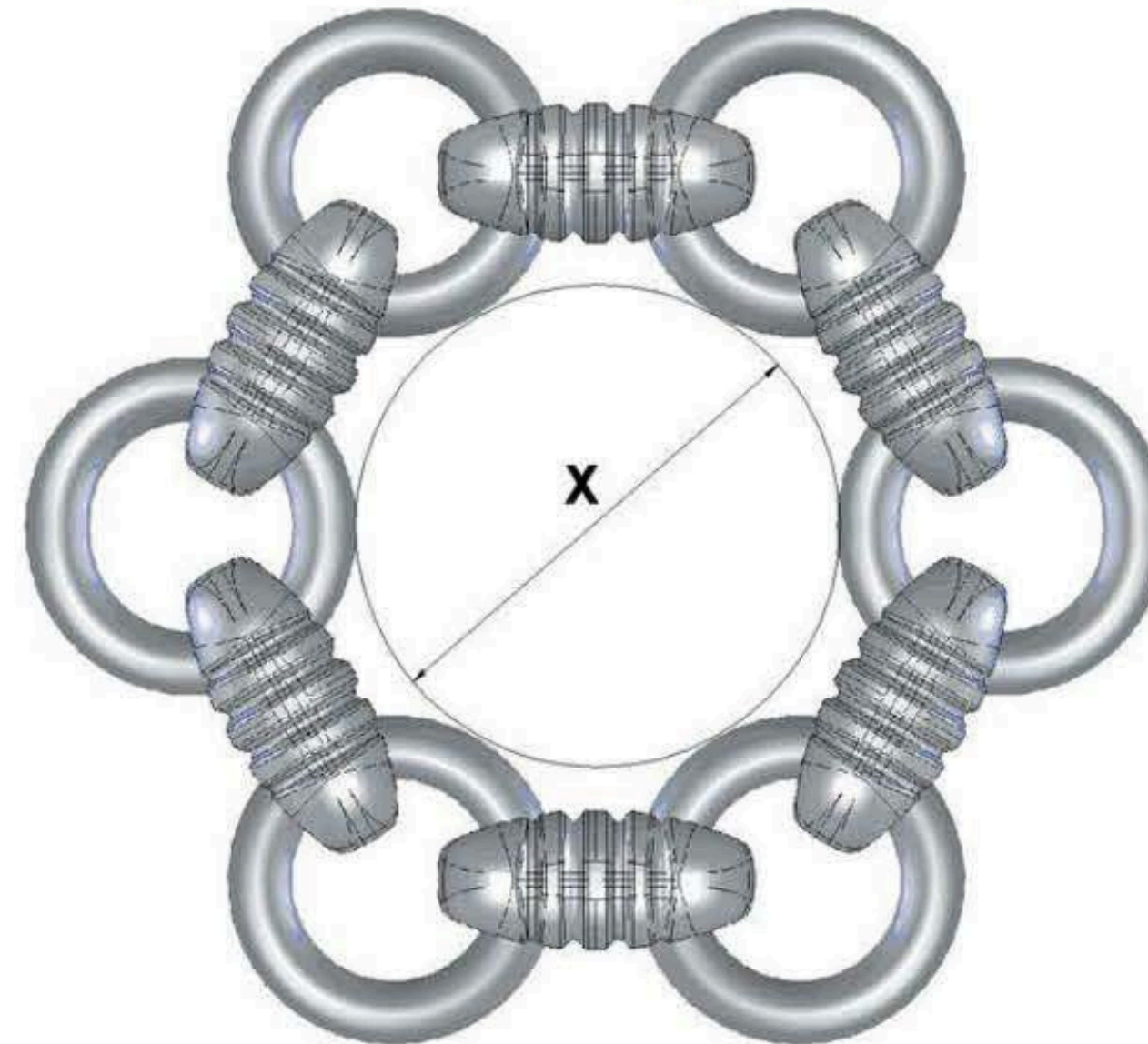
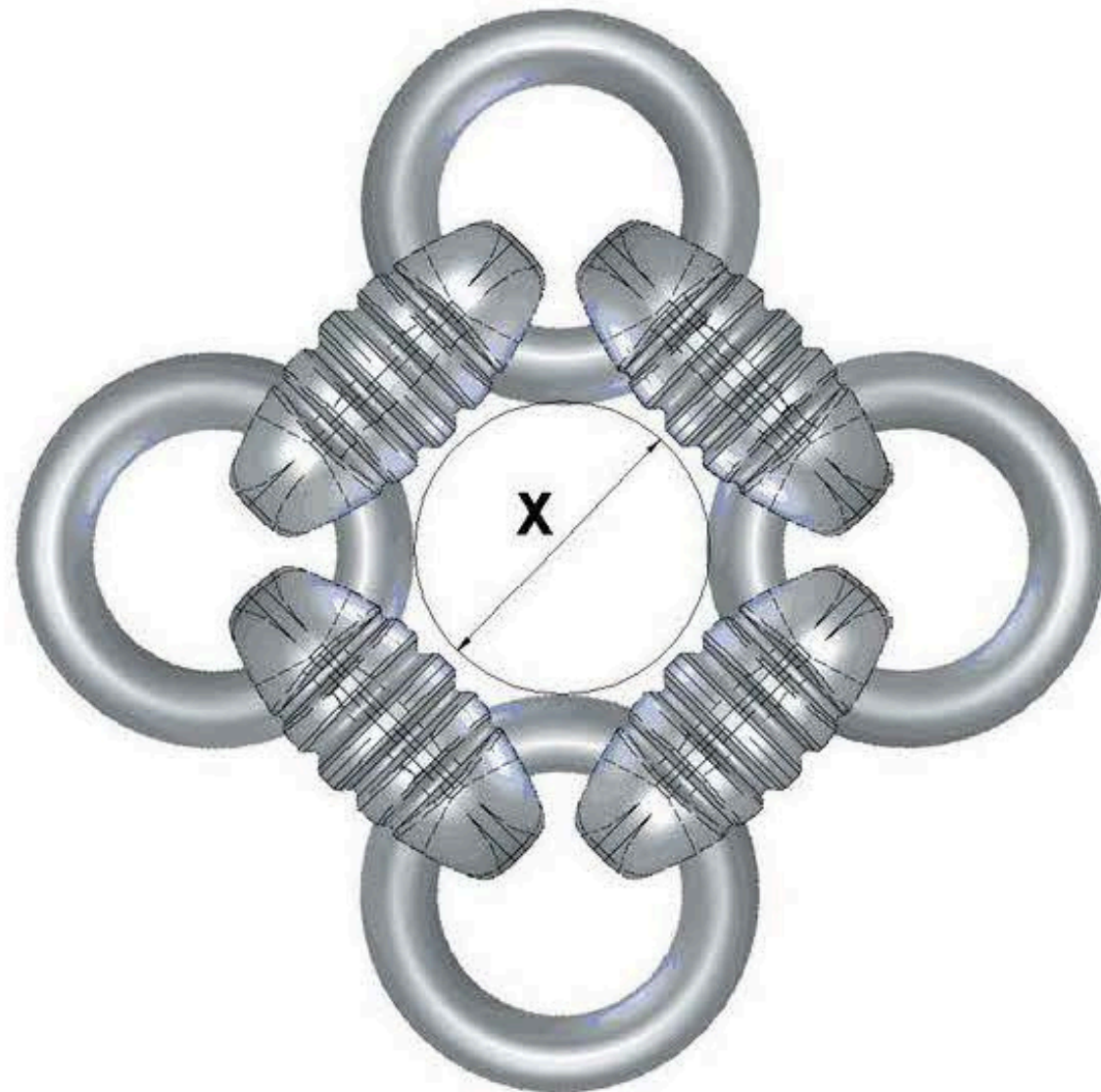
**Square  
(4x4 pattern)**

The fine mesh of square design provides optimum tire protection even on the sharpest rock.



**Hexa  
(6x6 pattern)**

The hexagonal mesh design ensures excellent grip and sufficient tire protection. Suitable for all vehicles where traction is needed before protection.



# TYCOON Ultimate



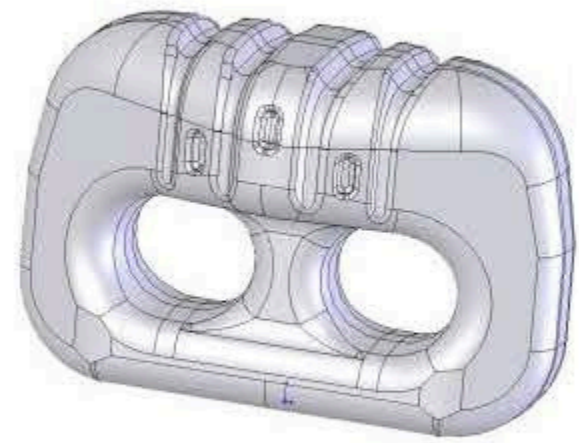
## Characteristics:

- Lower acquisition price than Tycoon 23
- Longer lifetime than Tycoon 23
- Is lower in weight than the Tycoon 23 -- 7.2% less weight
  - Better fuel efficiency
  - Easier installation
  - Lower shipping costs
  - Lowest cost of ownership per operating hour
  - Required clearances are reduced
  - Less chain re-tensioning as inner link and ring bearing points are more wear resistant

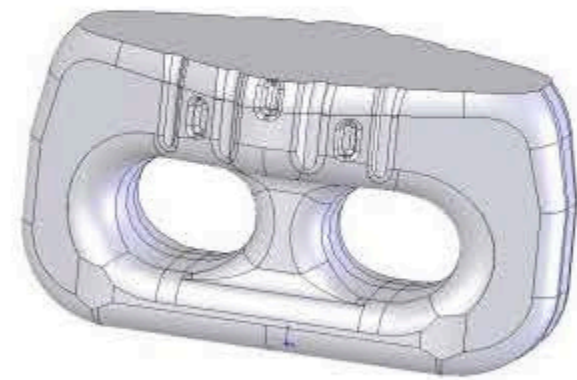
**suitable mesh design: square | hexa**



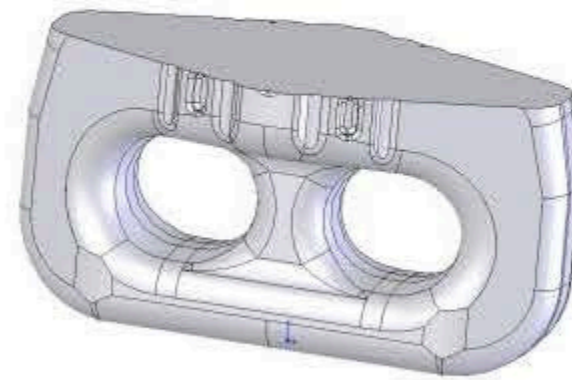
# TYCOON Ultimate – wear indicator



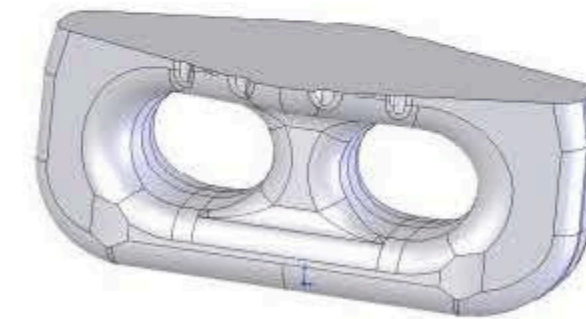
0% Wear



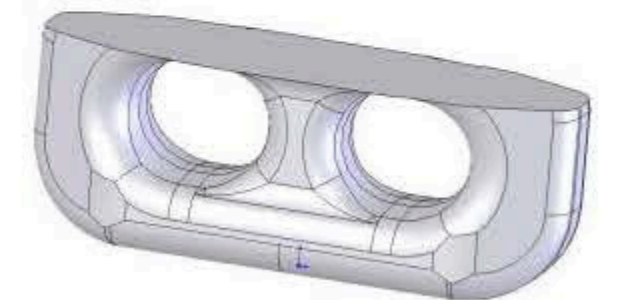
25% Wear



50% Wear



75% Wear



100%  
Wear

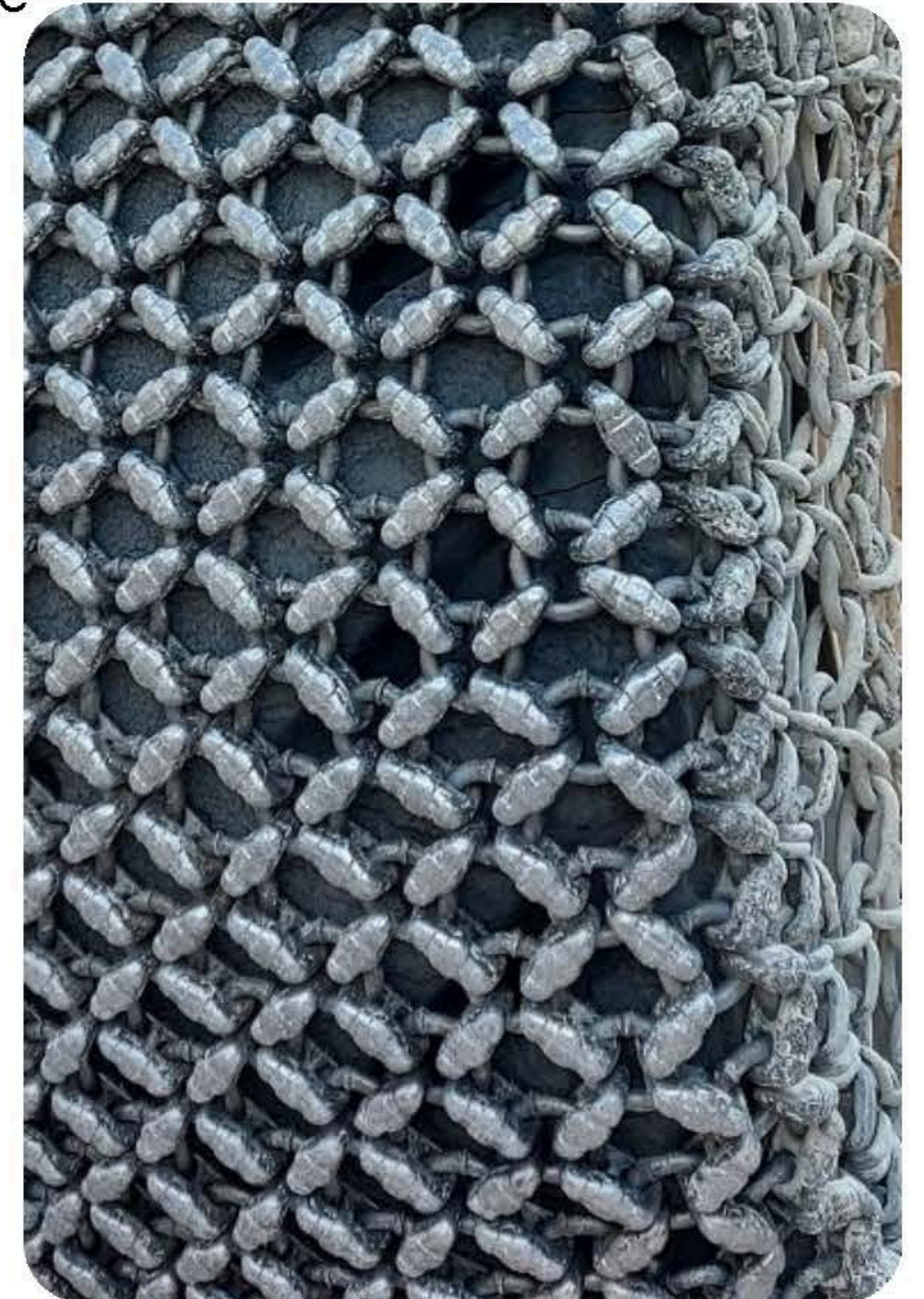
# COMPACT

Heavy duty link for giant loaders with large wear volume for maximum service life. Suitable for all rock applications and in large scale mining operations.

available in size 21 mm

## Characteristics:

- long-term approved link design
- large wear volume per m<sup>2</sup>
- high breaking resistance
- heavy duty tension chain
- reduced number of mechanical joints
- low need for maintenance
- less machine downtime



**suitable mesh design: square | hexa**



# SPIKE 21

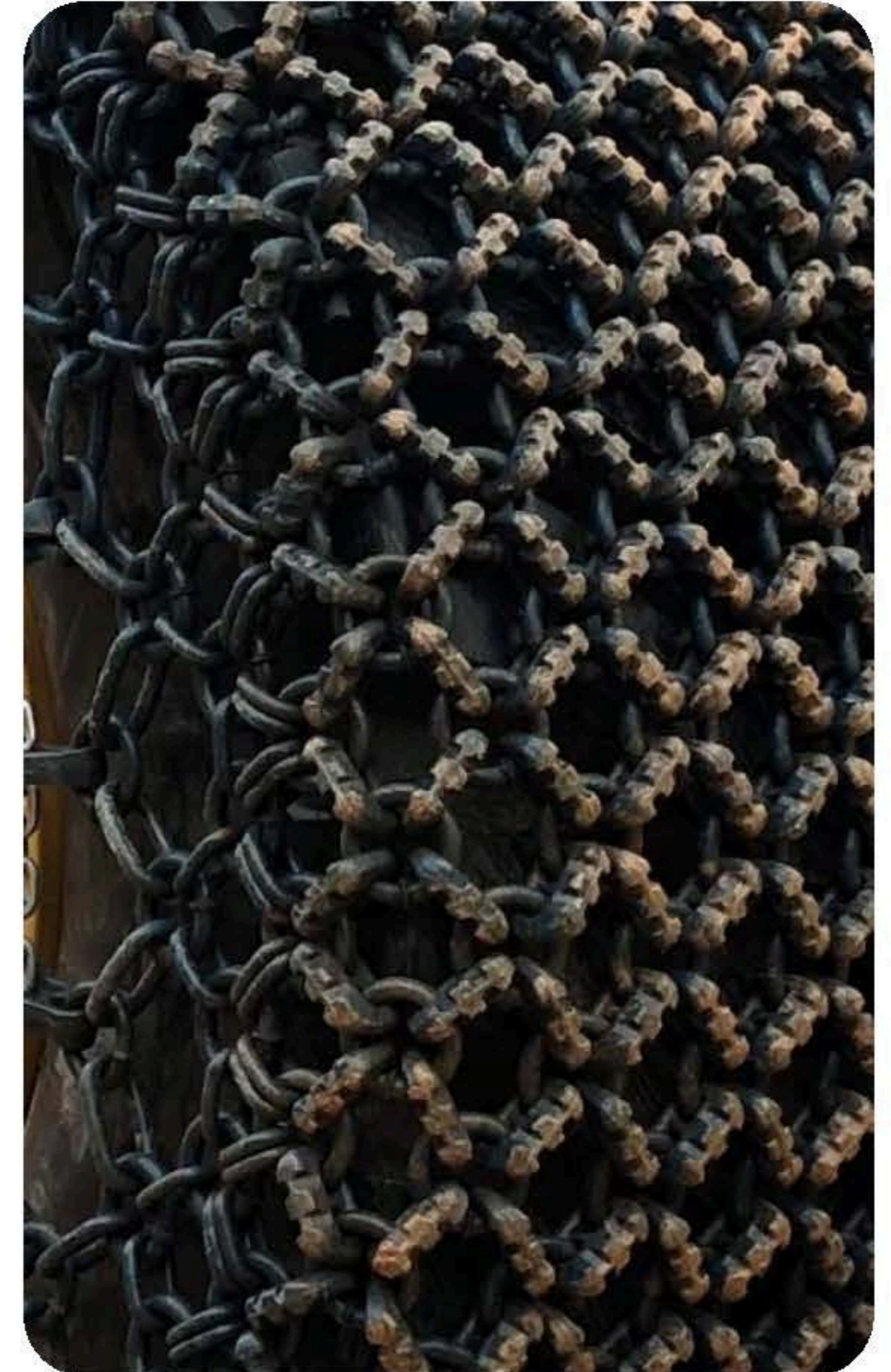
Narrow link design with grip teeth provides excellent traction and self cleaning. For all applications where protection & traction are needed.

available in sizes 21mm

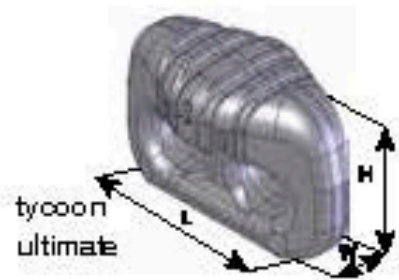
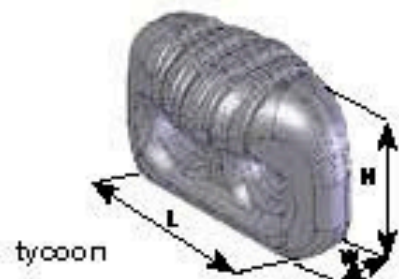

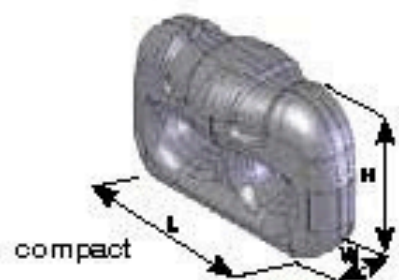
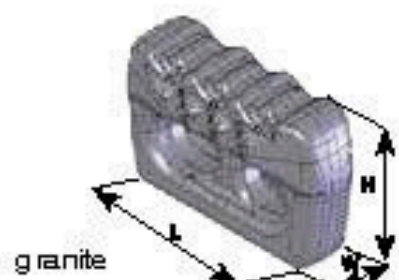
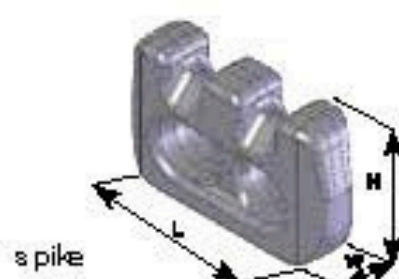
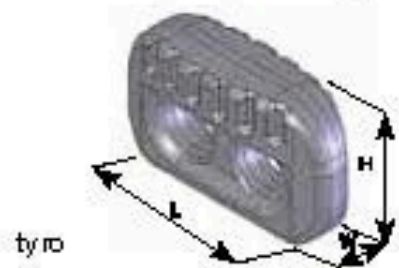
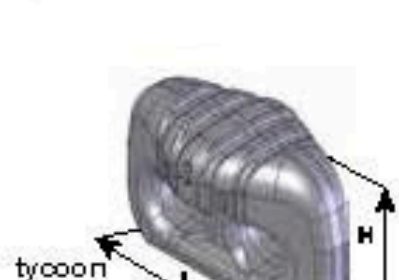



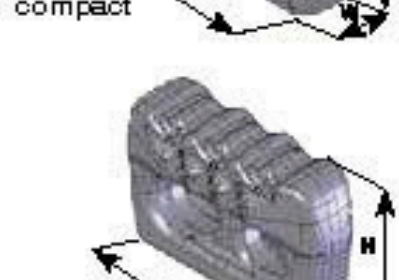
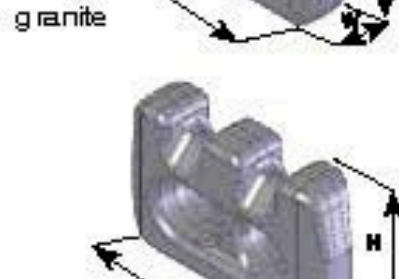
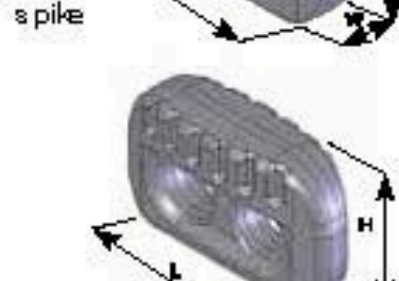

Characteristics:

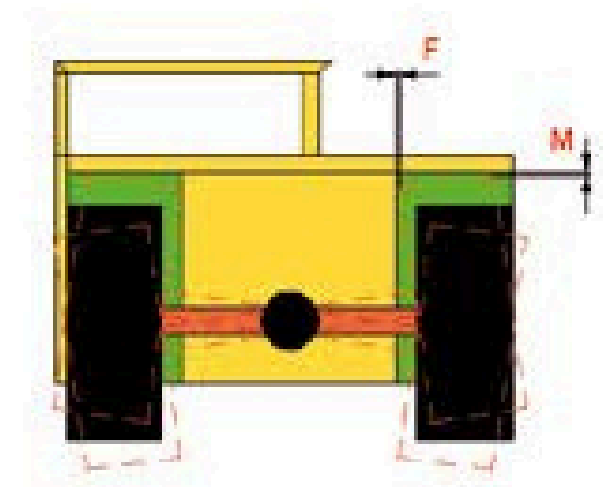
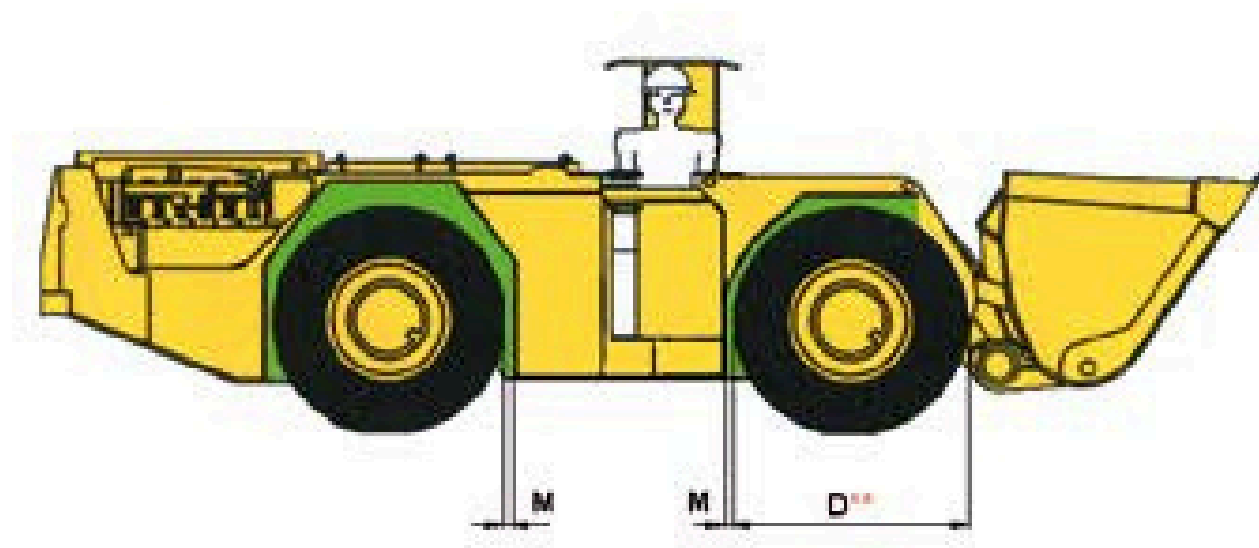
- long-term approved link design
- high breaking resistance
- heavy duty tension chain
- reduced number of mechanical joints
- low need for maintenance
- less machine downtime

**suitable mesh design: square | hexa**



# Measurements

	Link measurements			Ring measurements		Mesh opening (x)				Clearance required for TPC		
	L	W	H	d	D	square	hexa	quad cross	compact cross	M	F	R
 tycoon ultimate	108	57	72	21	70	81	163	-	-	120	80	110
	12											
 tycoon	63	22	38	12	45	53	103	103	174	70	50	70
	14											
 tycoon	60	16	40	12	45	50	96	99	169	70	50	70
	14											
 tycoon	79	39	47	14	50	61	122	-	-	80	60	80
	14/16											
 tycoon	79	27	46	14	50	63	122	122	204	80	60	80
	16											
 tycoon	76	26	46	14	50	63	122	122	204	80	60	80
	16											
 tycoon	71	19	47	14	50	57	112	112	194	80	60	80
	16											
 ringstar	79	39	47	16	54	64	122	-	-	80	60	80
	16											
 ringstar	88	48	59	16	54	60	130	-	-	90	70	90
	16											
 ringstar	90	34	53	16	54	67	130	130	222	90	70	90
	16											
 ringstar	86	22	54	16	54	67	130	130	222	90	70	90
	16											
 ringstar	88	30	54	16	54	67	130	130	222	90	70	90
	16											
 ringstar	-	21	69	14x17	54(46)	44	96	-	-	115	70	90
	16/18 S											
 compact	88	48	59	18	54	60	126	-	-	90	70	90
	18											
 compact	100	38	65	18	64	81	156	156	258	100	70	100
	18											
 compact	88	24	60	18	64	70	138	140	241	100	70	100
	18											
 compact	97	34	62	18	64	81	156	156	258	100	70	100
	18/20 S											
 compact	100	38	65	19.5	64	78	153	-	-	100	70	100
	20											
 compact	97	54	67.5	19.5	64	74	153	-	-	100	70	100
	21											
 compact	108	46	72	21	70	83	163	-	-	120	80	110
	21											
 compact	108	30	72	21	70	83	163	164	275	120	80	110
	23											
 compact	112	60	76	23	72	84	170	-	-	120	80	110
	23											



# PEWAG - Tire Protection Chains



**STRONG  
IS NOT  
ENOUGH**  
[www.pewag.com](http://www.pewag.com)



*The best  
price/performance  
ratio for the lowest  
hourly costs, and a  
service that secures  
your business!*



**Enhance Productivity, Protect Your Tyres – Trust Pewag.**

[WWW.ENSTRUC.COM](http://WWW.ENSTRUC.COM) | [INFO@ENSTRUC.COM](mailto:INFO@ENSTRUC.COM)