



# Quarry Loader Tyre Protection Chains

[WWW.ENSTRUC.COM](http://WWW.ENSTRUC.COM) | [INFO@ENSTRUC.COM](mailto:INFO@ENSTRUC.COM)



# How pewag TPCs are produced & our guarantee to you?

## Welding equipment:

- Production on electronically operated welding machines for a consistently high quality standard

## Heat treatment:

- The **special hardening** using latest techniques leads to **high wear resistance** and particularly **long service life** (*biggest chamber furnaces in Europe*)
- **Cryogenic** treatment for **higher wear & breaking resistance of rings & links**

## Quality Assurance System:

- Our Quality Inspectors operating as part of our PEWAG Quality Assurance System – certified according to ISO 9001

## Environmental responsibility:

- Ecological awareness in all areas according to ISO 14001



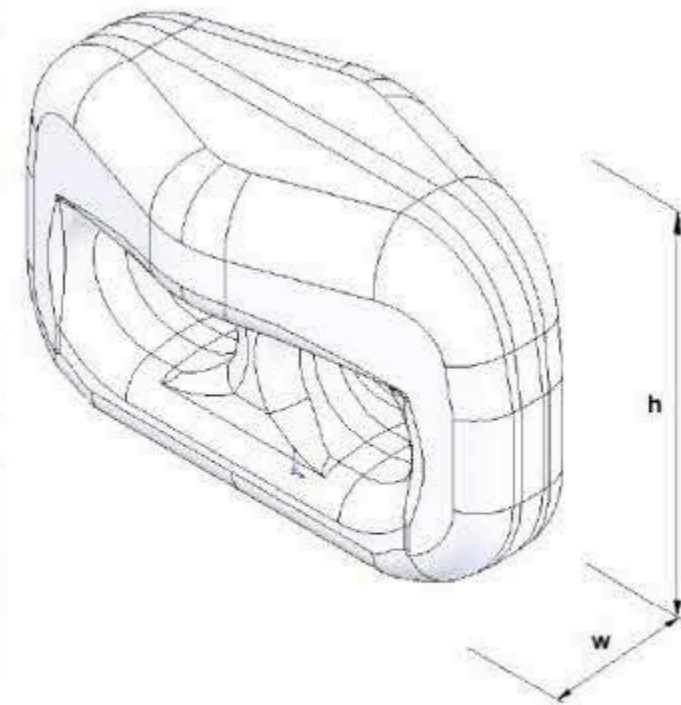
# A specialised link for every condition



**SPIKE 21:** Narrow link design with prominent grip teeth provides additional traction and self cleaning.



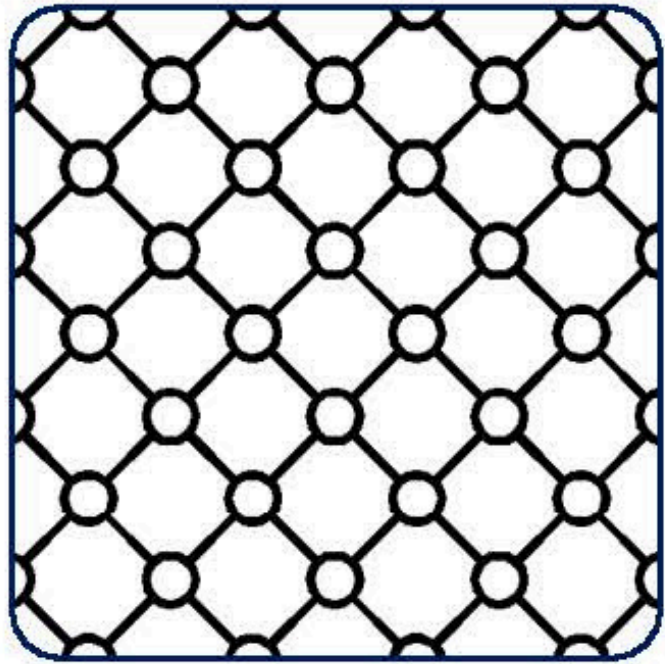
**TYRO:** Innovative link design with excellent wear volume. By offering best protection and sufficient traction it is suitable for S-L sized earth moving equipment working in soft to medium hard rock applications.



## **RENEGADE 4x4:**

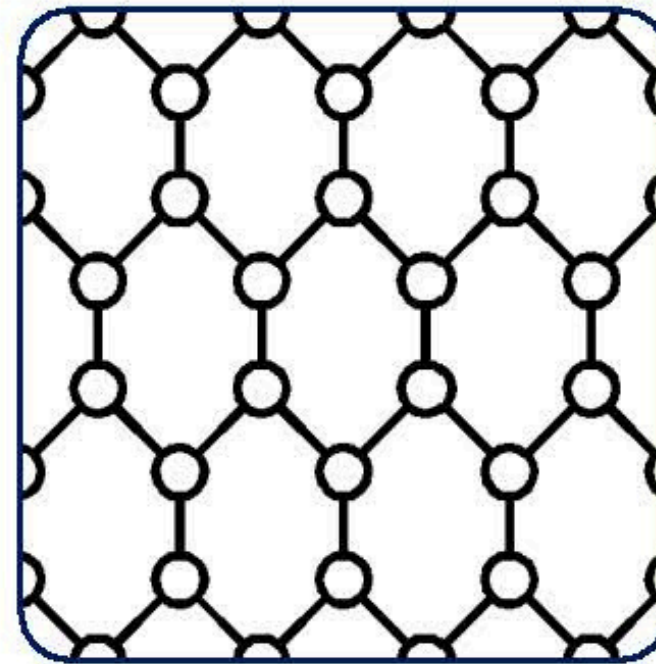
- + Heavy-Duty 18mm rings with 70mm diameter
- + No downtime due to tire failure (no sudden death)
- + Easy installation, all parts included for installation
- + Long lifetime of chain
- + Very easy & fast replacement of rings and pin locks with hammer-free spare-parts available

# Types of Mesh – We've got you covered



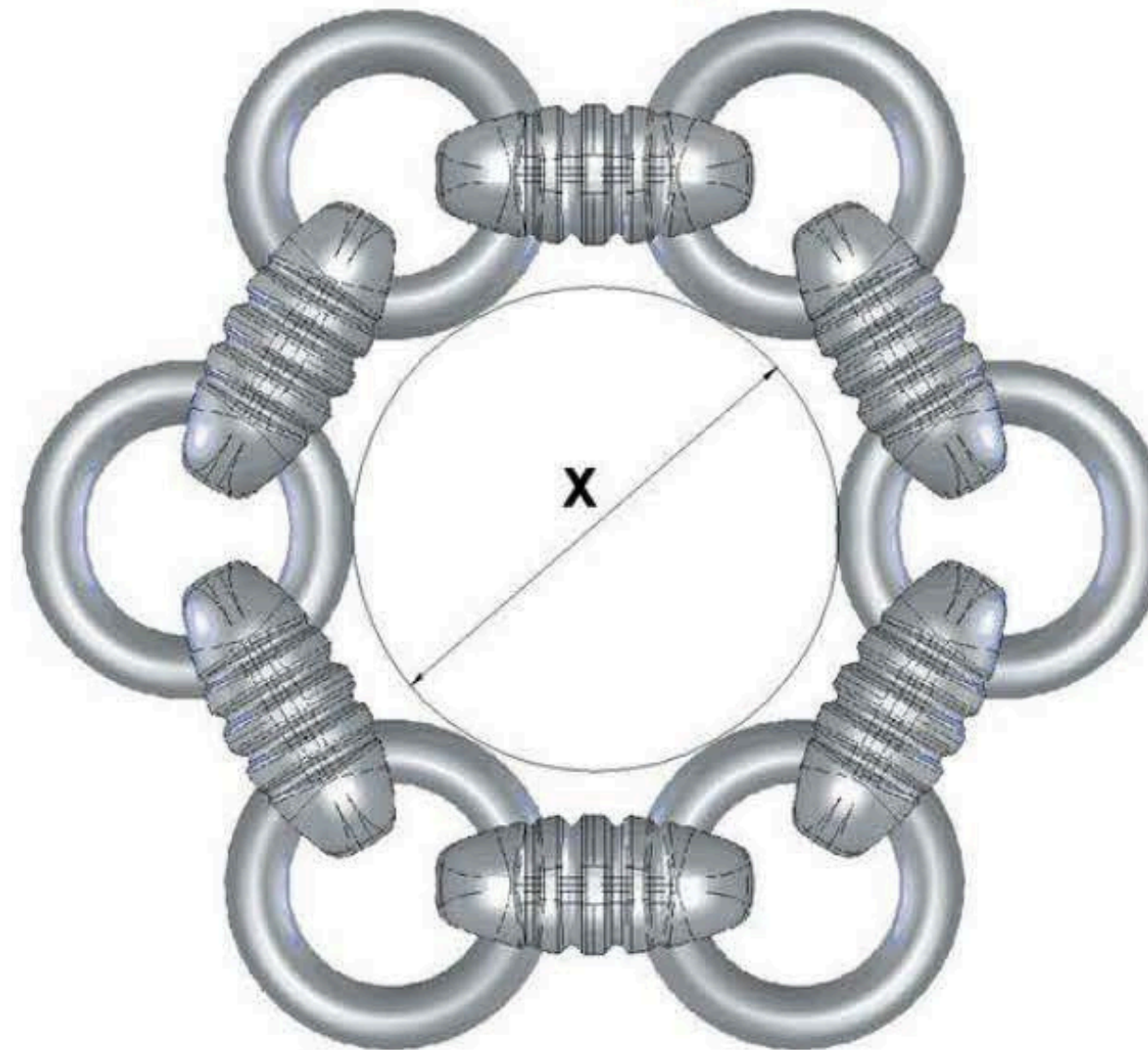
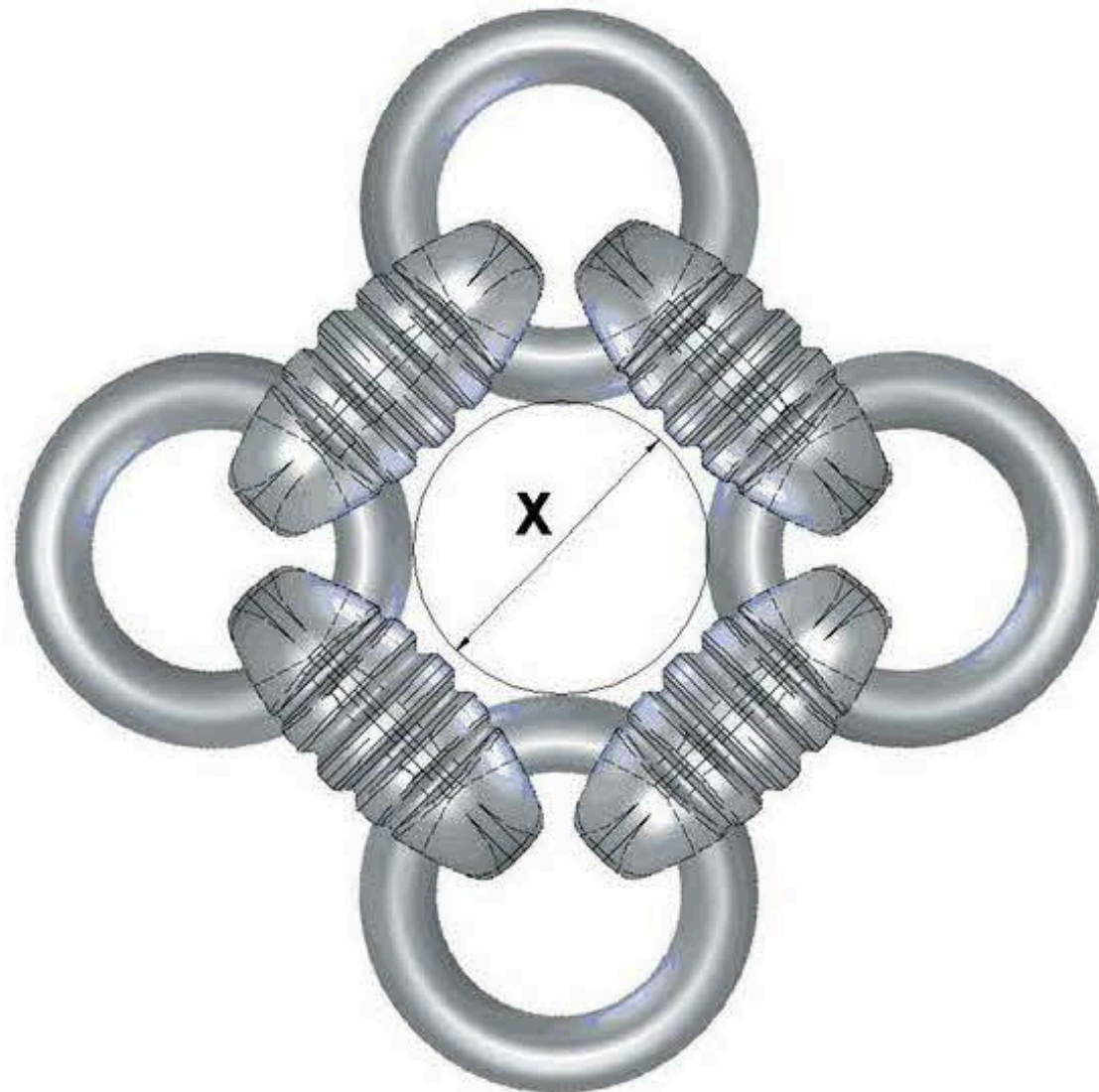
**Square  
(4x4 pattern)**

The fine mesh of square design provides optimum tire protection even on the sharpest rock.



**Hexa  
(6x6 pattern)**

The hexagonal mesh design ensures excellent grip and sufficient tire protection. Suitable for all vehicles where traction is needed before protection.



# SPIKE 21

Narrow link design with grip teeth provides excellent traction and self cleaning. For all applications where protection & traction are needed.

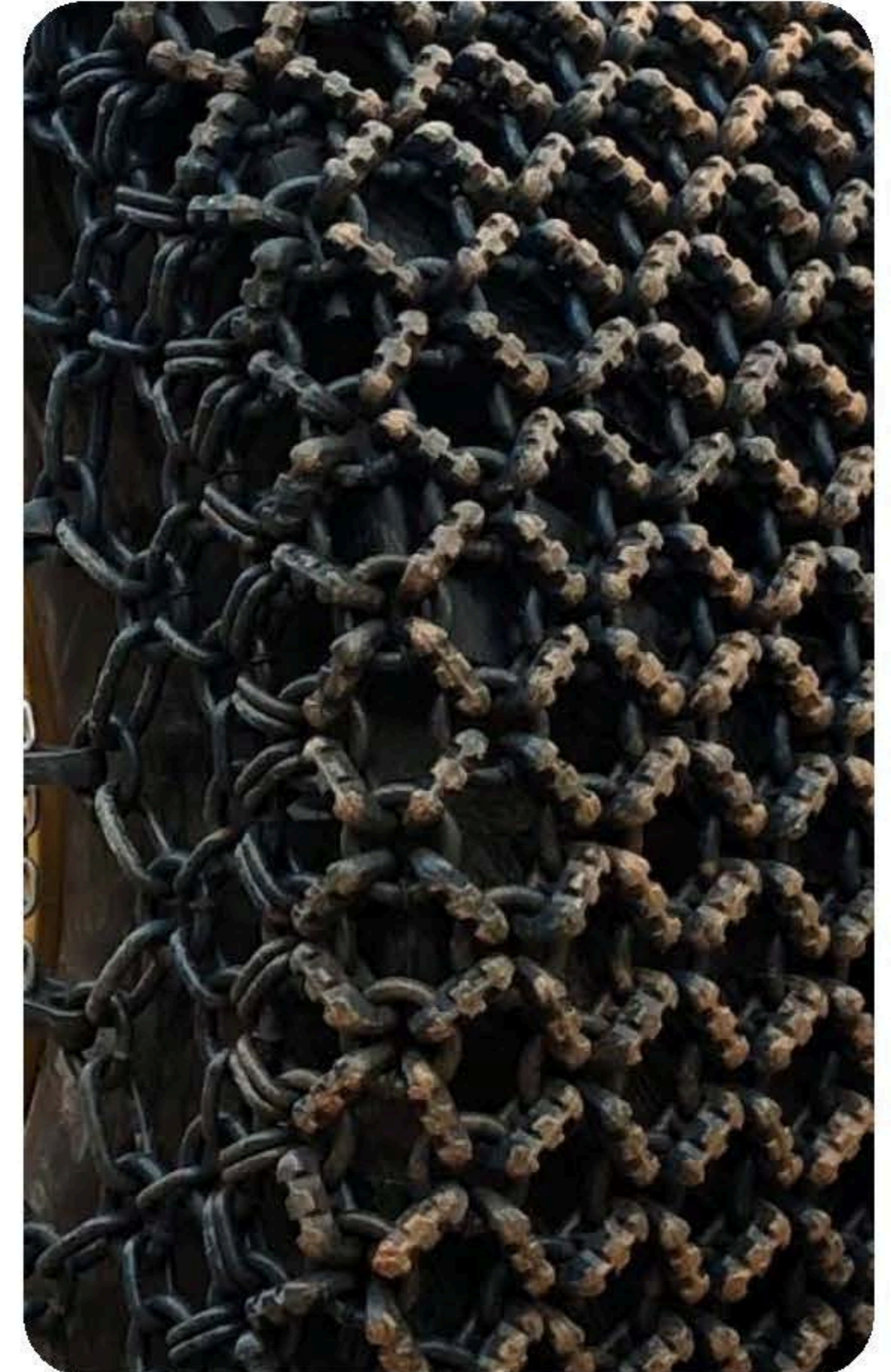
available in sizes 21mm

Characteristics:

- long-term approved link design
- high breaking resistance
- heavy duty tension chain
- reduced number of mechanical joints
- low need for maintenance
- less machine downtime



**suitable mesh design: square | hexa**



# TYRO

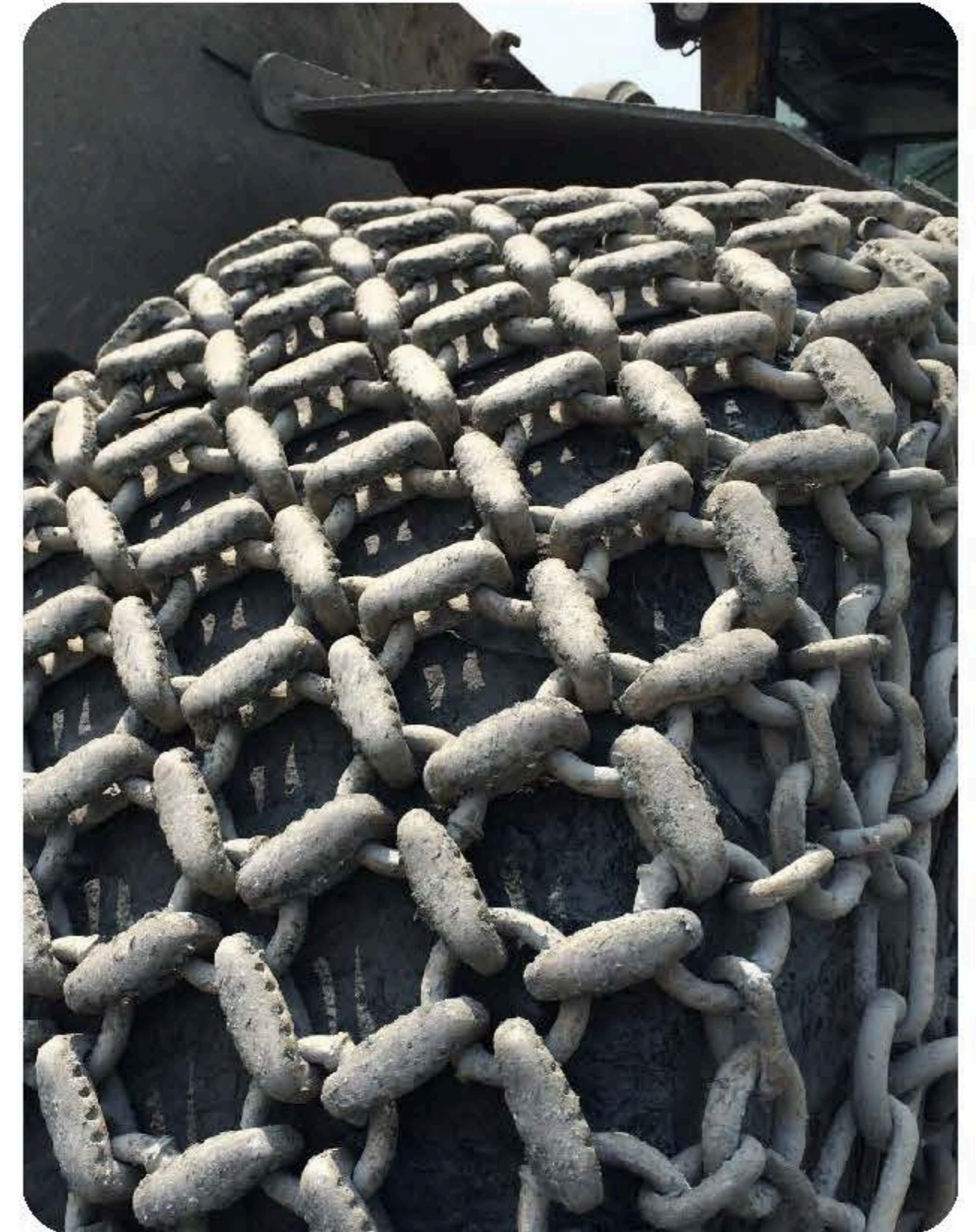
Versatile chain link suitable for applications on soft to medium hard rocks up to tire size 35/65-33. This link design provides excellent protection and traction for the tires.

available in sizes 14 | 16 | 18 mm

Characteristics:

- Excellent adhesion
- Good breaking strength
- Heavy-duty tension chain
- consisting of a single section (low number of mechanical parts)

Suitable mesh: square | hexa



# PEWAG - Tire Protection Chains



**STRONG  
IS NOT  
ENOUGH**  
[www.pewag.com](http://www.pewag.com)



*The best  
price/performance  
ratio for the lowest  
hourly costs, and a  
service that secures  
your business!*





**Enhance Productivity, Protect Your Tyres – Trust Pewag.**

[WWW.ENSTRUC.COM](http://WWW.ENSTRUC.COM) | [INFO@ENSTRUC.COM](mailto:INFO@ENSTRUC.COM)